

Gráfico 1: Evolução histórica do PIB real, 1980-2015

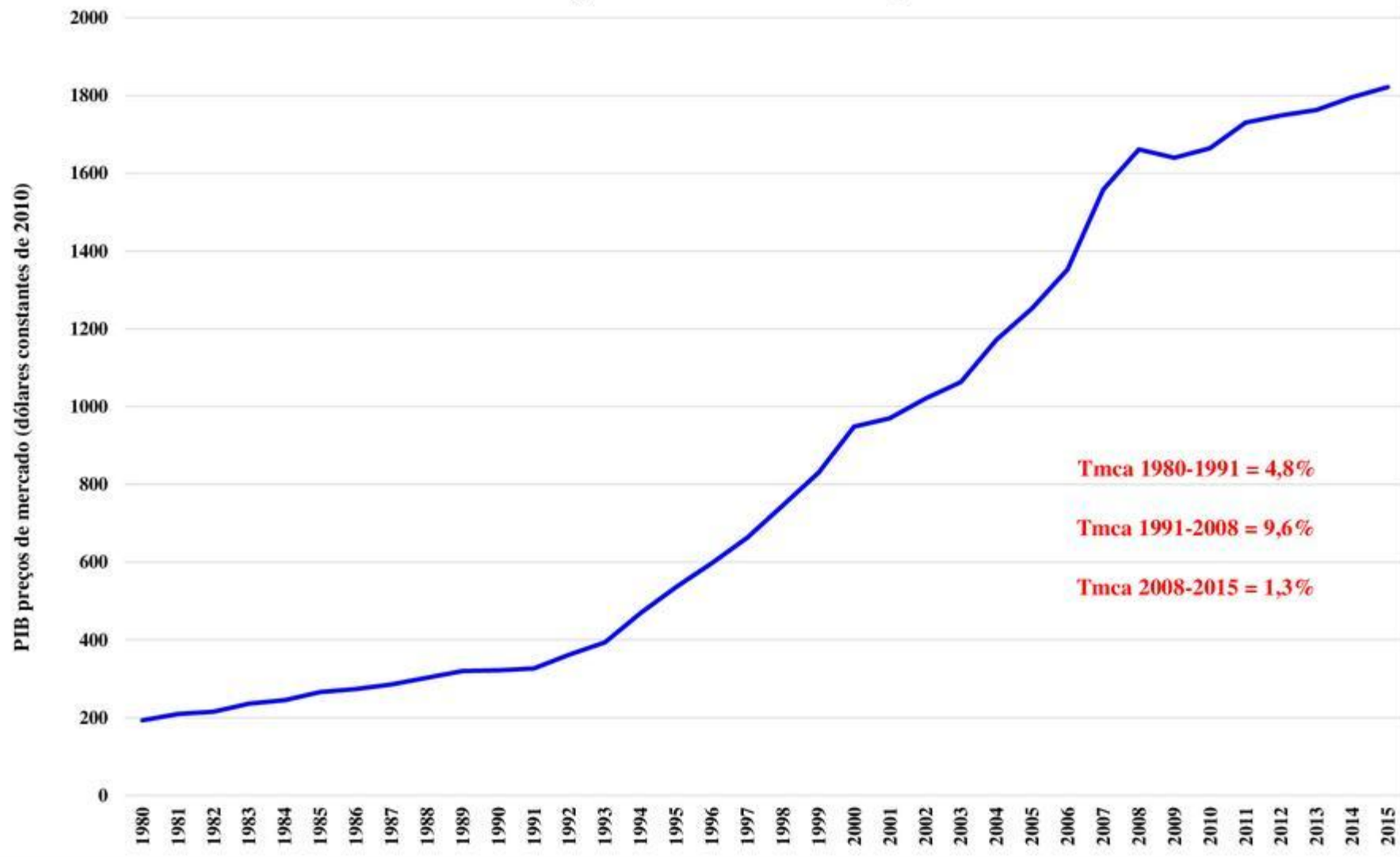


Gráfico 2: Evolução do RNB per capita, 1982-2015

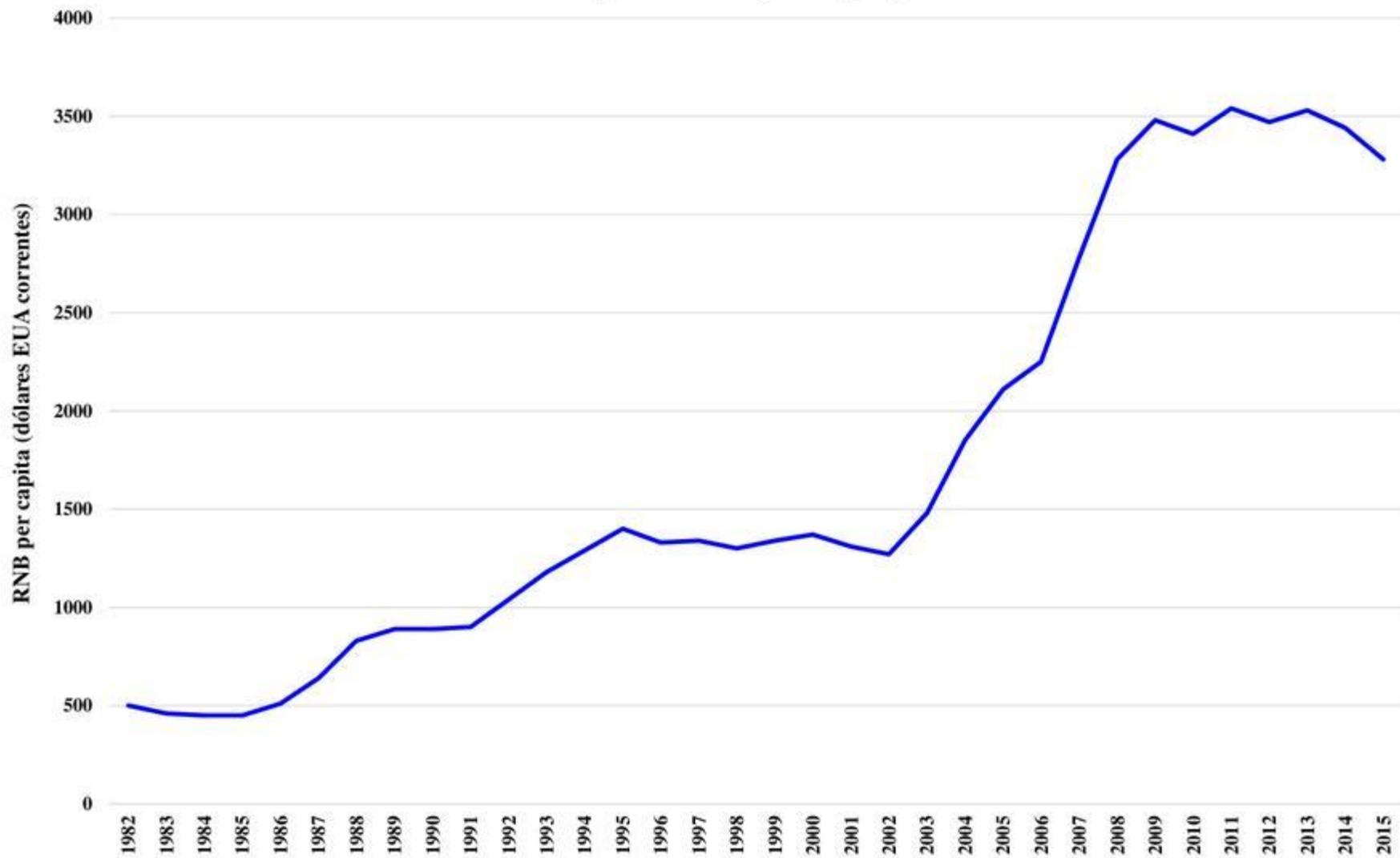


Gráfico 3: Estrutura sectorial da produção (oferta), 1980-2015

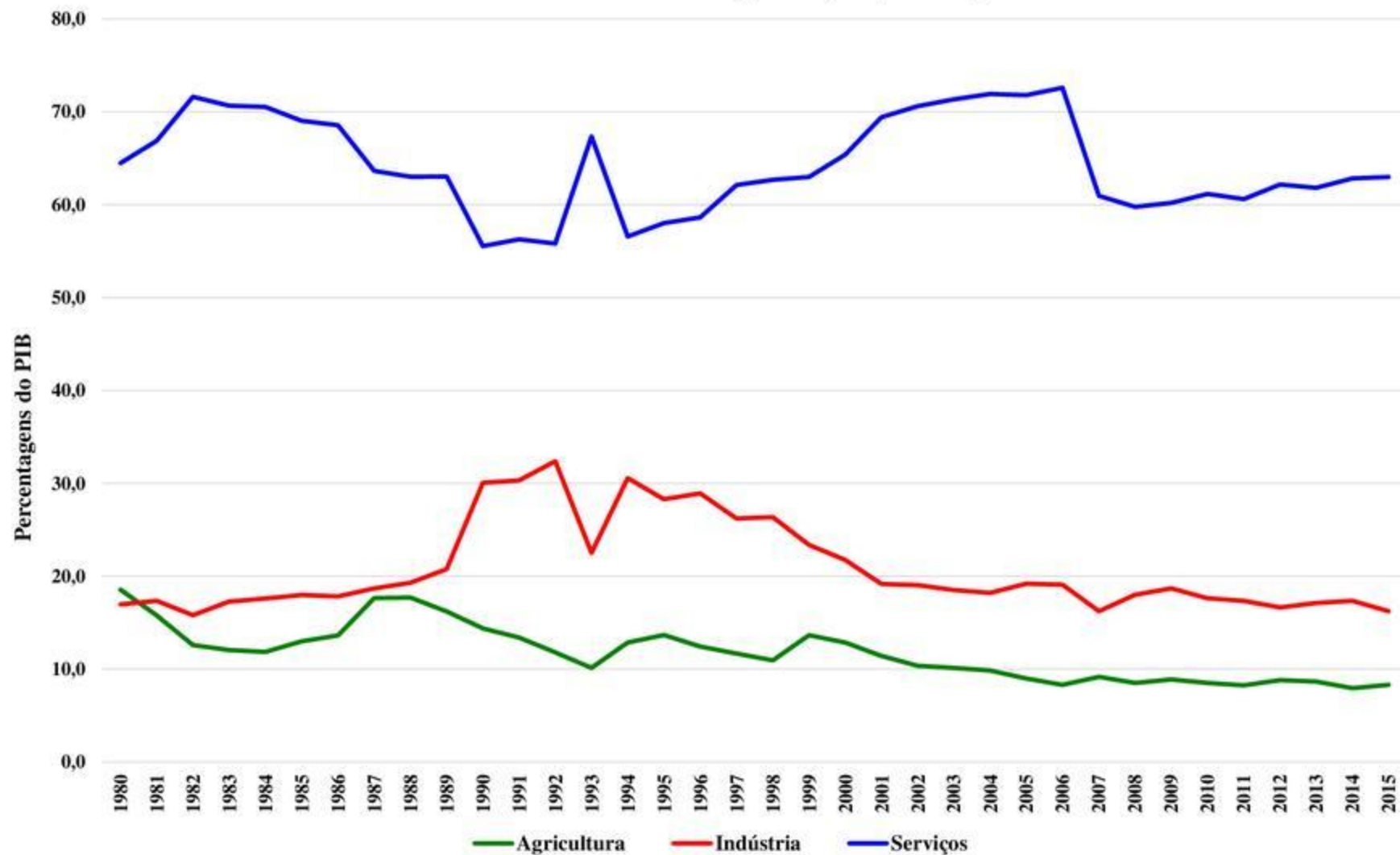


Gráfico 4: Estrutura da despesa (procura), 1980-2014

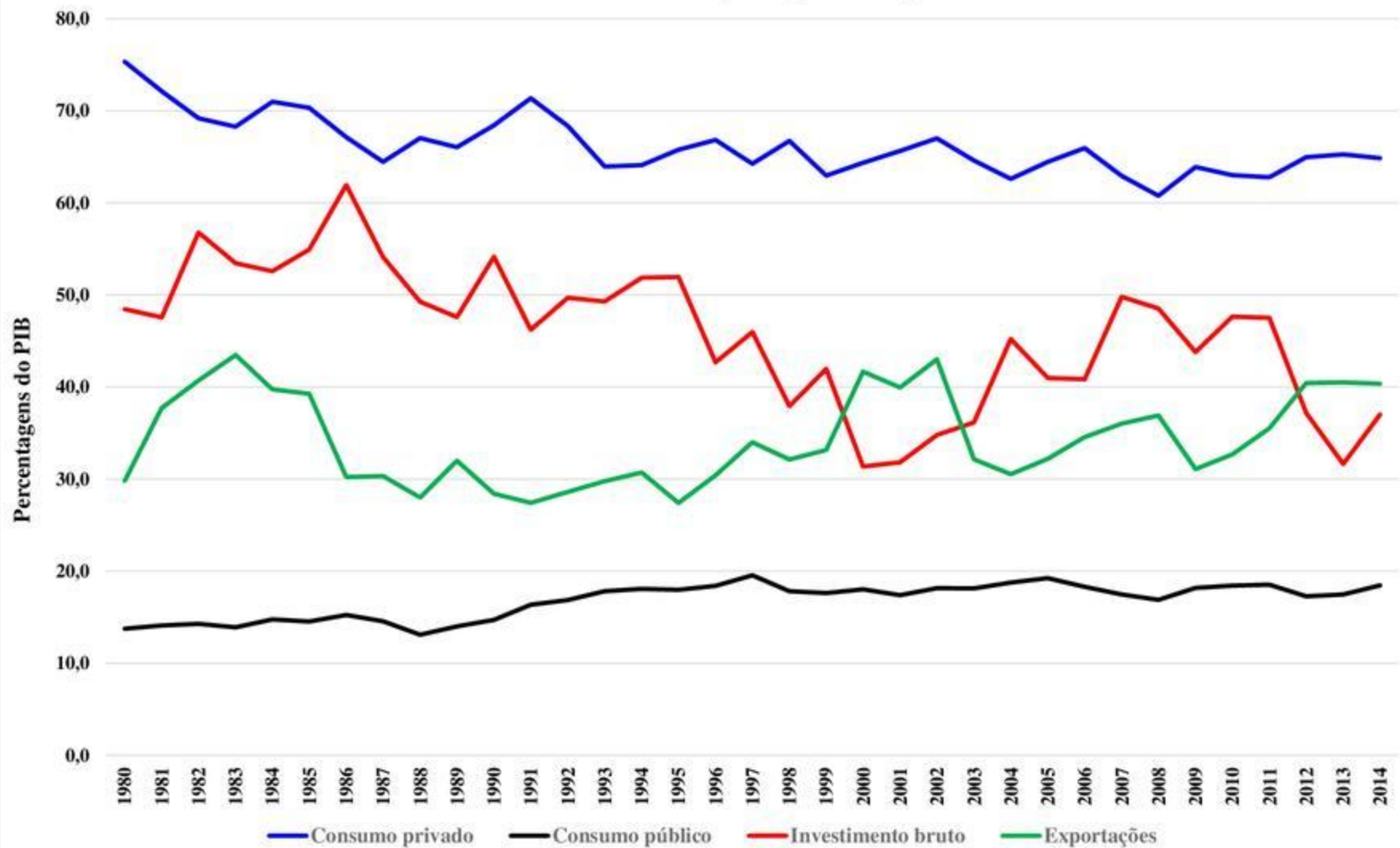


Gráfico 5: Evolução do comércio externo, 1980-2013

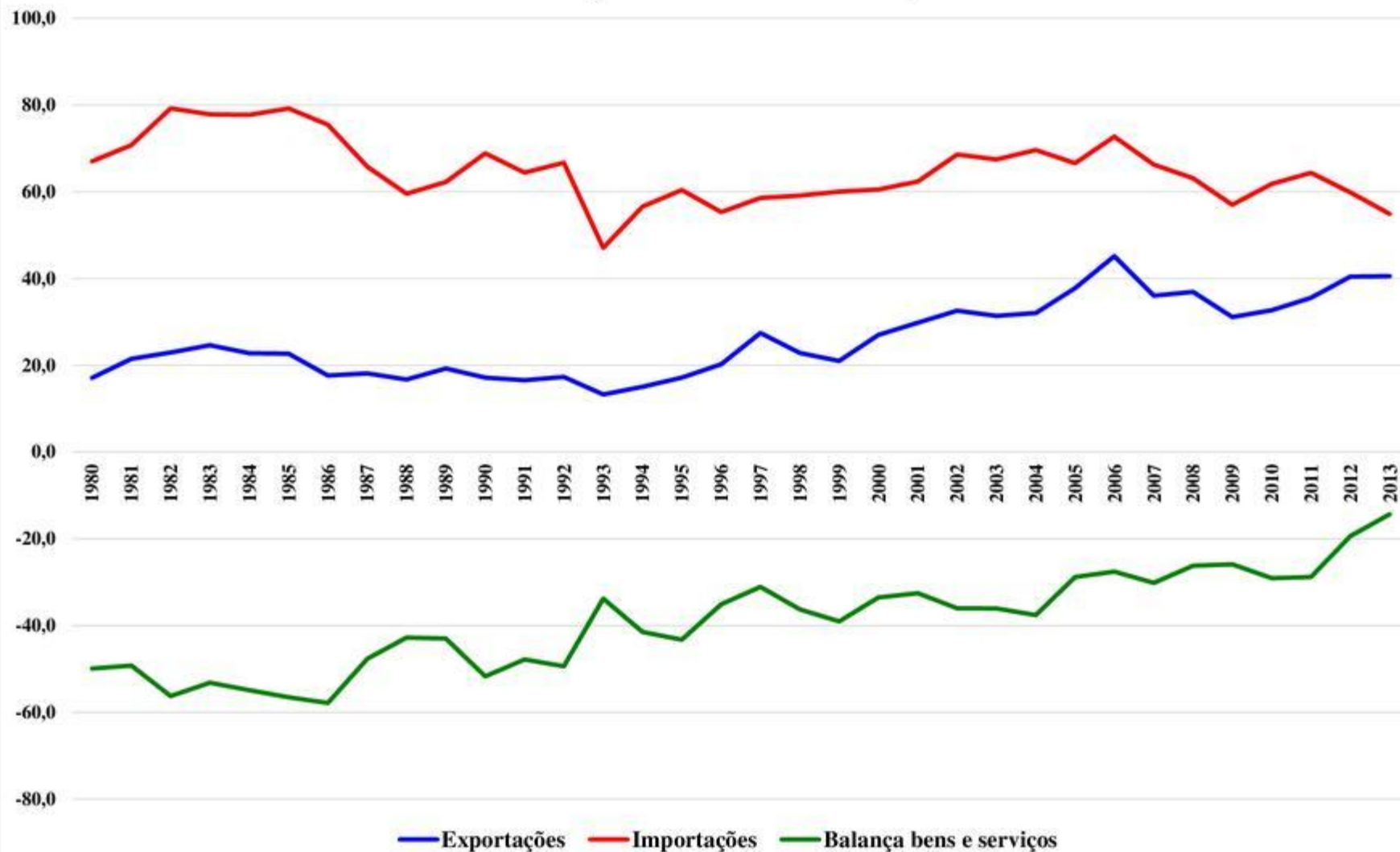


Gráfico 6: Fluxos de financiamento, 1983-2011

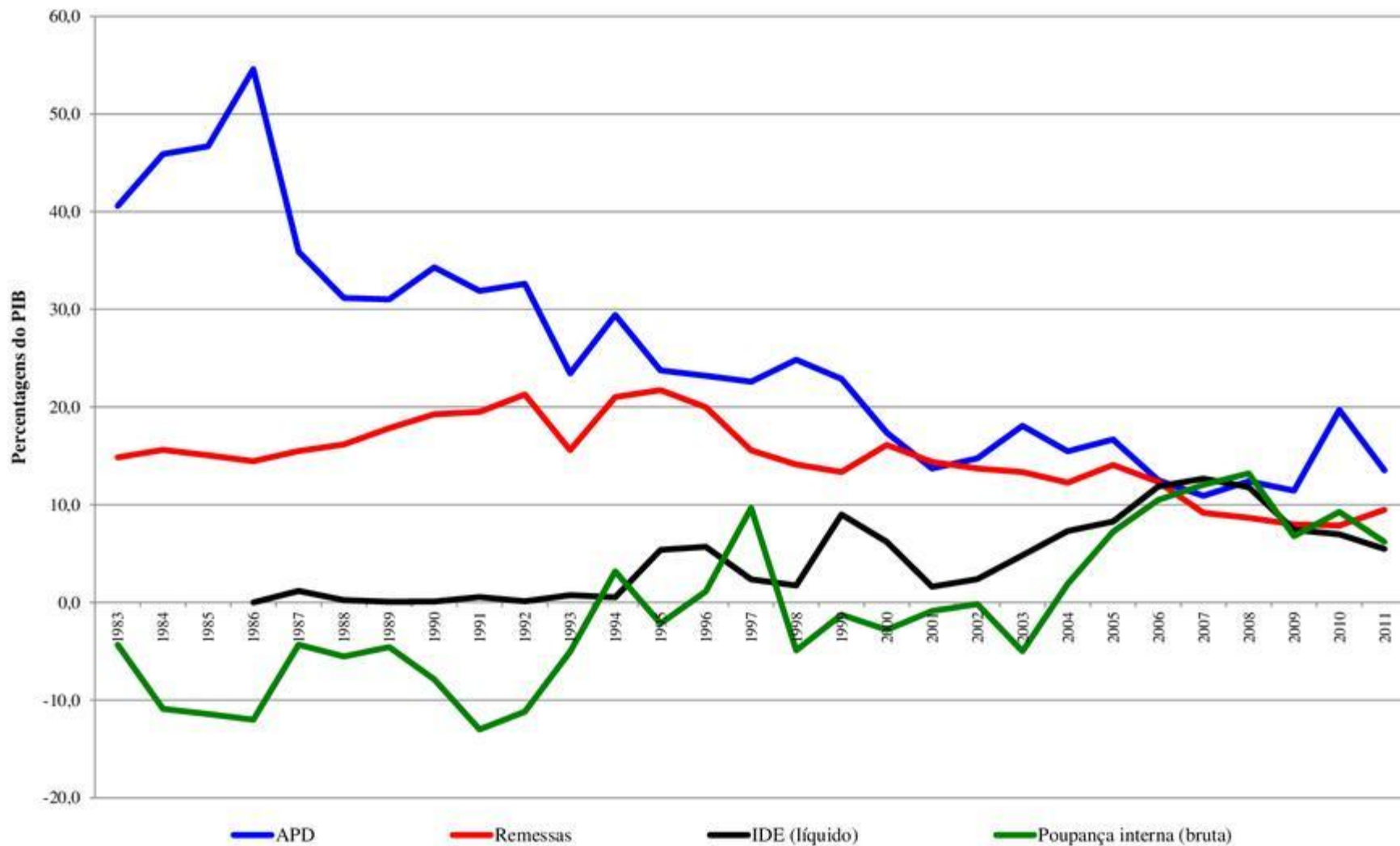
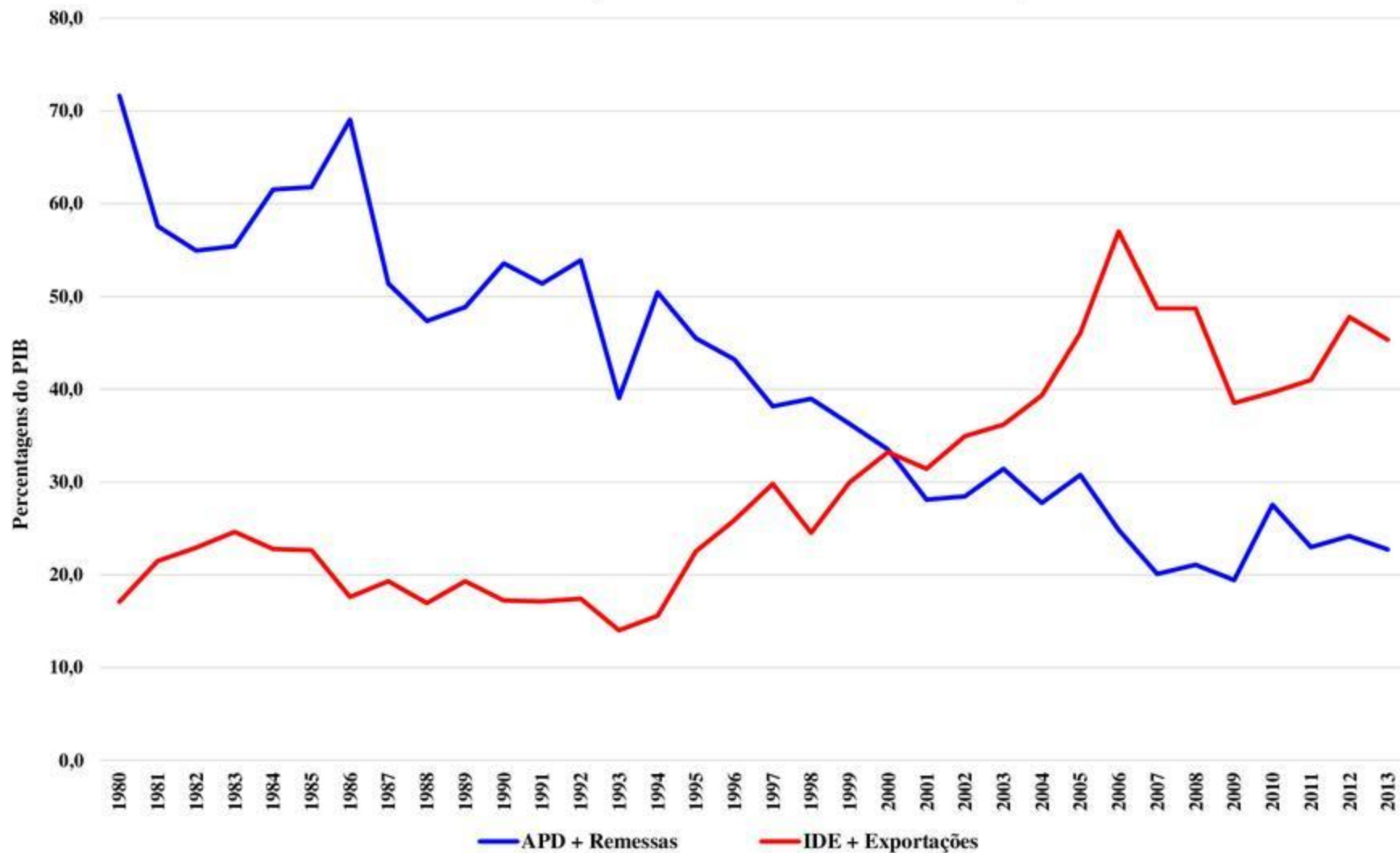


Gráfico 7: Fluxos de "dependência" e fluxos de mercado, 1980-2013



Quadro 1: PIB per capita ordenado de 28 Pequenos Estados Insulares

Ordem	1990	2000		
1	Bahamas, The	11.860	Bahamas, The	20.330
2	Cyprus	9.510	Cyprus	14.860
3	Malta	7.600	Malta	11.170
4	Barbados	7.520	Barbados	11.110
5	Bahrain	7.220	Bahrain	10.900
6	Antigua and Barbuda	5.740	Antigua and Barbuda	8.620
7	Palau	5.096	St. Kitts and Nevis	8.300
8	Seychelles	5.000	Seychelles	7.290
9	St. Kitts and Nevis	4.940	Palau	5.890
10	Trinidad and Tobago	3.710	Trinidad and Tobago	5.420
11	St. Lucia	2.730	St. Lucia	4.400
12	Mauritius	2.440	Mauritius	3.870
13	Dominica	2.300	Grenada	3.860
14	Grenada	2.250	Dominica	3.600
15	St. Vincent and the Grenadines	2.110	St. Vincent and the Grenadines	3.470
16	Fiji	1.790	Marshall Islands	2.850
17	Marshall Islands	1.660	Fiji	2.230
18	Micronesia, Fed. Sts.	1.528	Micronesia, Fed. Sts.	2.210
19	Tonga	1.220	Tonga	2.060
20	Vanuatu	1.200	Samoa	1.600
21	Maldives	980	Vanuatu	1.430
22	Tuvalu	980	Cabo Verde	1.370
23	Solomon Islands	977	Kiribati	1.330
24	Cabo Verde	890	Solomon Islands	1.010
25	Kiribati	720	Comoros	420
26	Samoa	695	Maldives	nd
27	Comoros	560	Sao Tome and Principe	nd
28	Sao Tome and Principe	nd	Tuvalu	nd

Data from database: World Development Indicators

Last Updated: 02/01/2017